



The Future is in our Hands

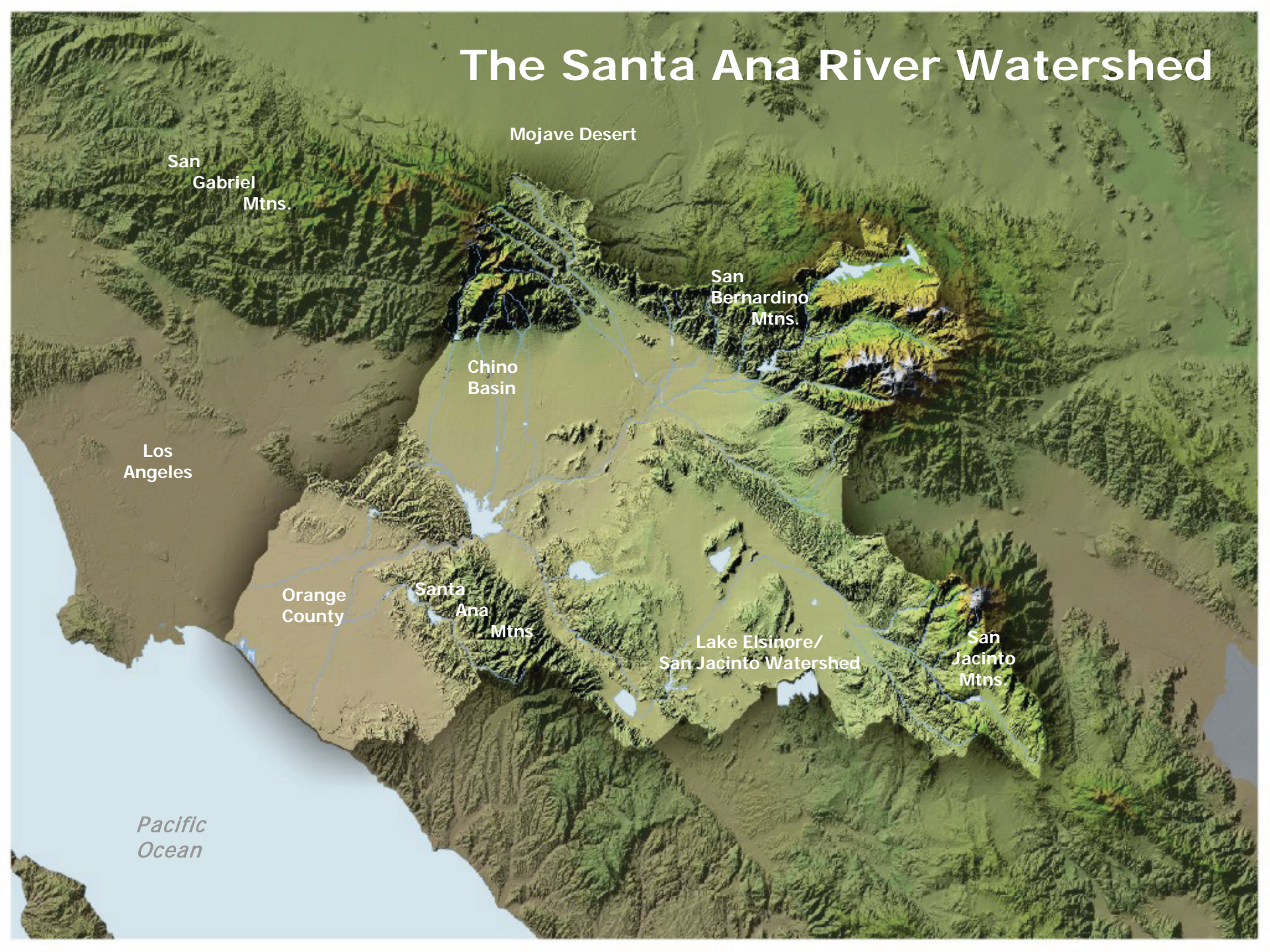
Regional Water Infrastructure & Jobs



Celeste Cantú
SAWPA



The Santa Ana River Watershed





Vision



A sustainable Santa Ana Watershed is drought-proofed, salt balanced, and supports economic and environmental vitality in the year 2030





One Water One Watershed OWOW Plan



- Integrated Regional Water Management Planning for Santa Ana River Watershed
- Over 2000 watershed stakeholders involved
- Template for future statewide water resource planning

One Water One Watershed
2009 Integrated Regional Water Management Plan

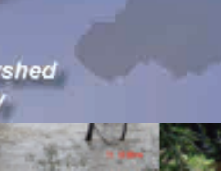
Threats

- Climate Change: Reduced Water from Delta
- Colorado River Basin Drought: Reduced Groundwater Recharge

Moving Toward Sustainability

Santa Ana Watershed Project Authority

The cover features a central graphic with the text 'Moving Toward Sustainability' curved over a globe. Surrounding the globe are several images: a group of people on horseback, a pink irrigation valve, a water tap with a sunburst effect, a lake with reeds, a water treatment tank, and a modern building interior. A map of the Santa Ana River Watershed is visible in the bottom right corner.





OWOW

Assumptions & Guiding principals



- See the Watershed as a whole system from the 30,000 foot level.
- Collaboration across boundaries.
- Not only solving problems but creating a new desirable future.





The System Approach



1

- The Santa Ana River Watershed is a hydrologic whole

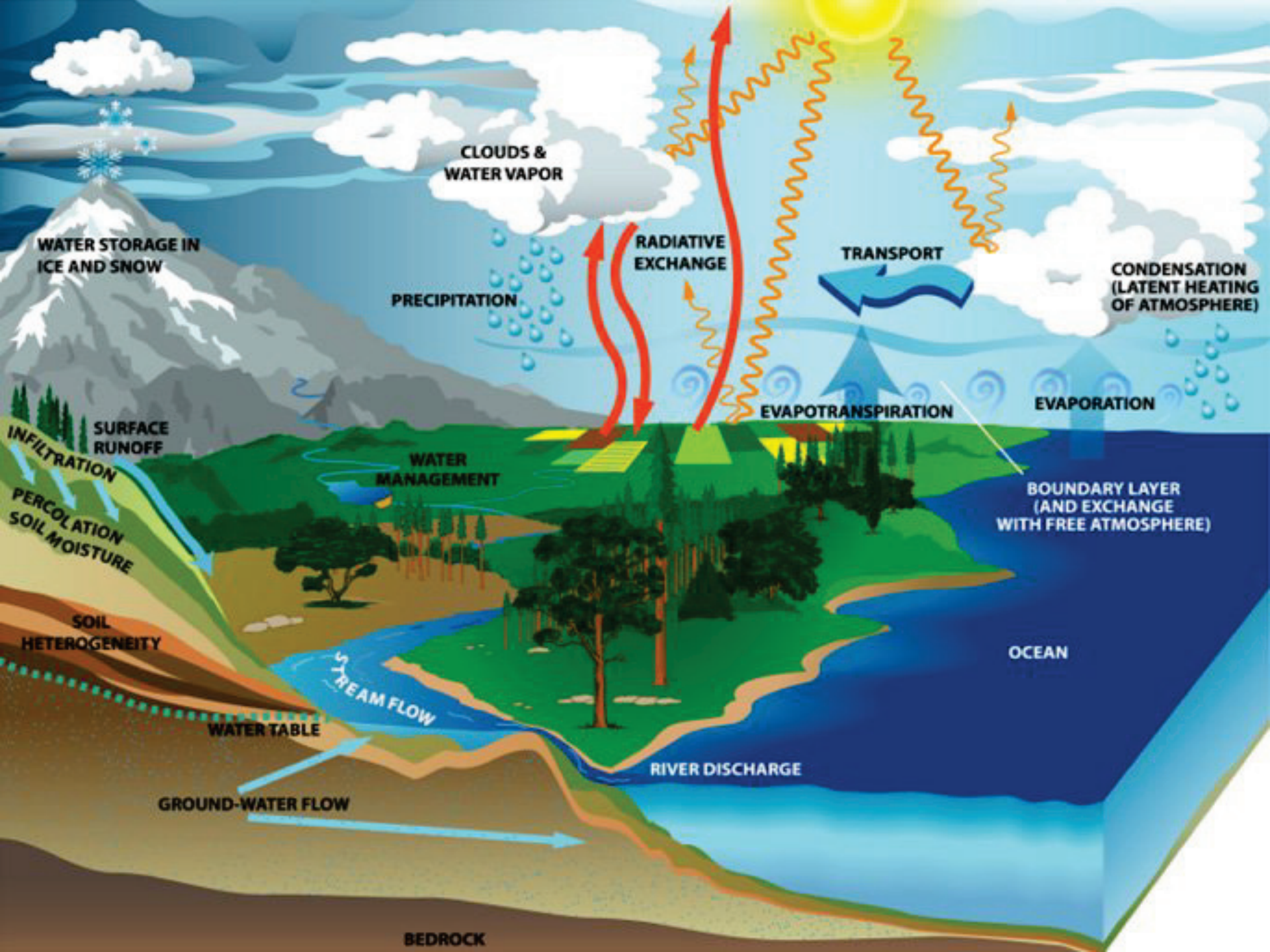
2

- Working in concert with nature is cost effective

3

- See each problem as interrelated, seek efficiencies and synergies







Pillars: Integrate Complexity





Collaborate Across Boundaries



1

- **As citizens of the Watershed, create solutions**

2

- **No ONE person can do it alone**

3

- **Think Big!**





Four Horsemen of the Apocalypse



• Climate Change

• Reduced Water from Delta



• Colorado River Basin Drought

• Explosive Development & Population growth





Create A New



1

- OWOW is a shared Vision for the Watershed

2

- Breakthrough innovations

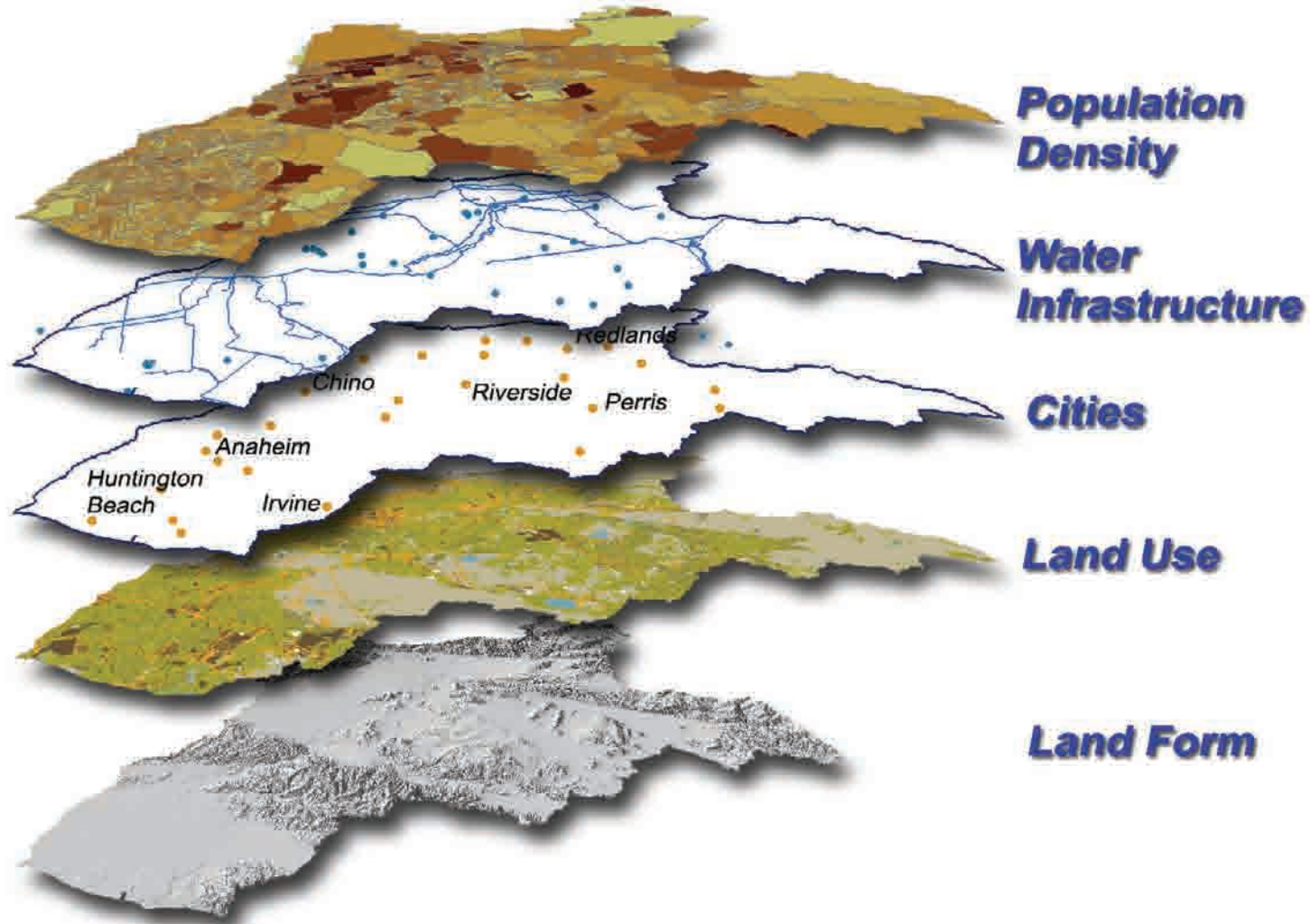
3

- Establish a new Water Ethic





The Santa Ana River Watershed



Biggest Bang for Buck: Water Use Efficiency



•How to fix what we have



•How to fix what we have



- How to fix what we have



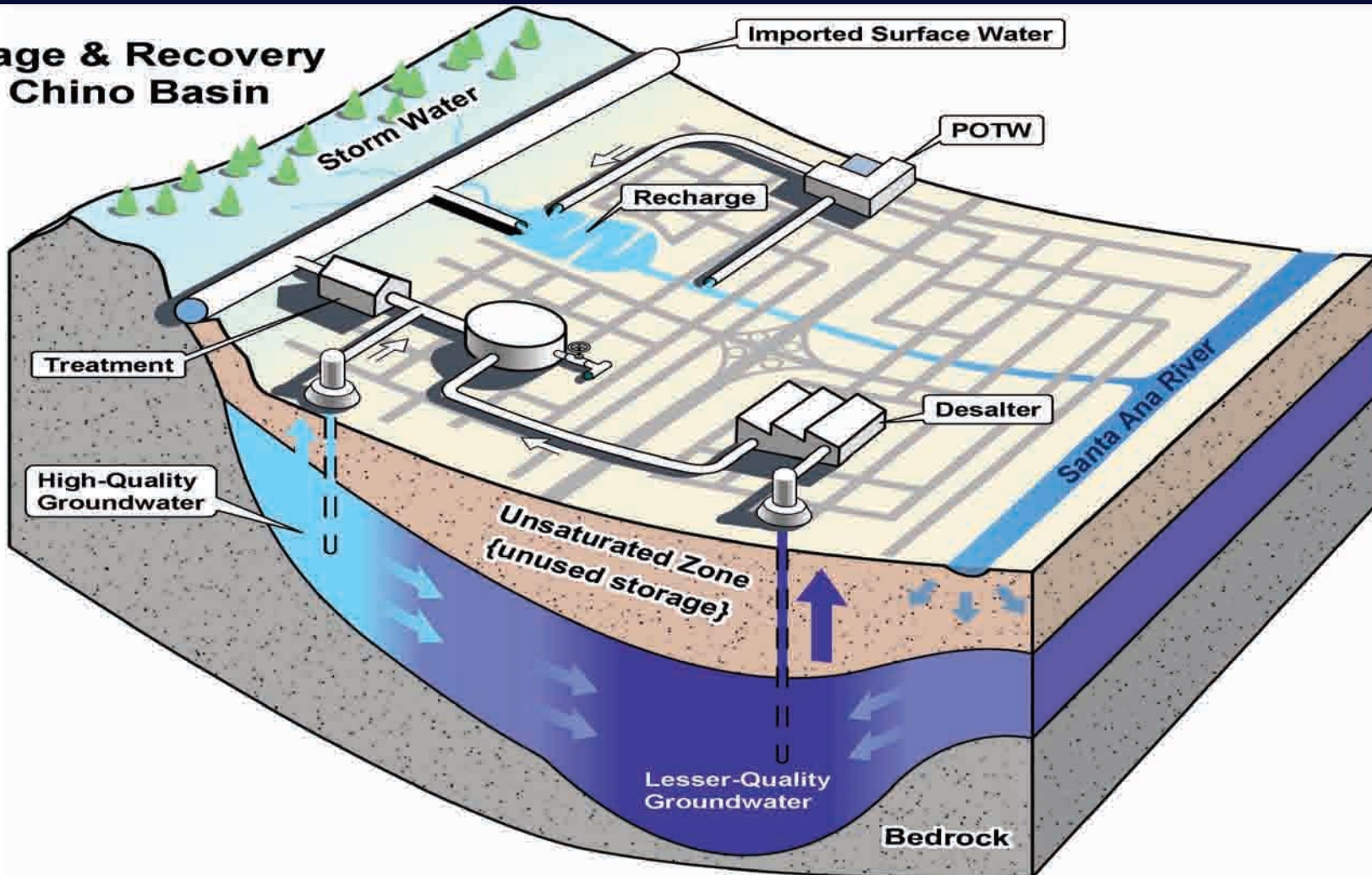
•Photo Simulation by Steve Price, Urban Advantage (www.urban-advantage.com)



What is an Integrated Project?



Storage & Recovery in Chino Basin





Manage Rainfall as a Resource



- Provide appropriate flood control capacity and other benefits to the community
- Maximize beneficial use of rain water







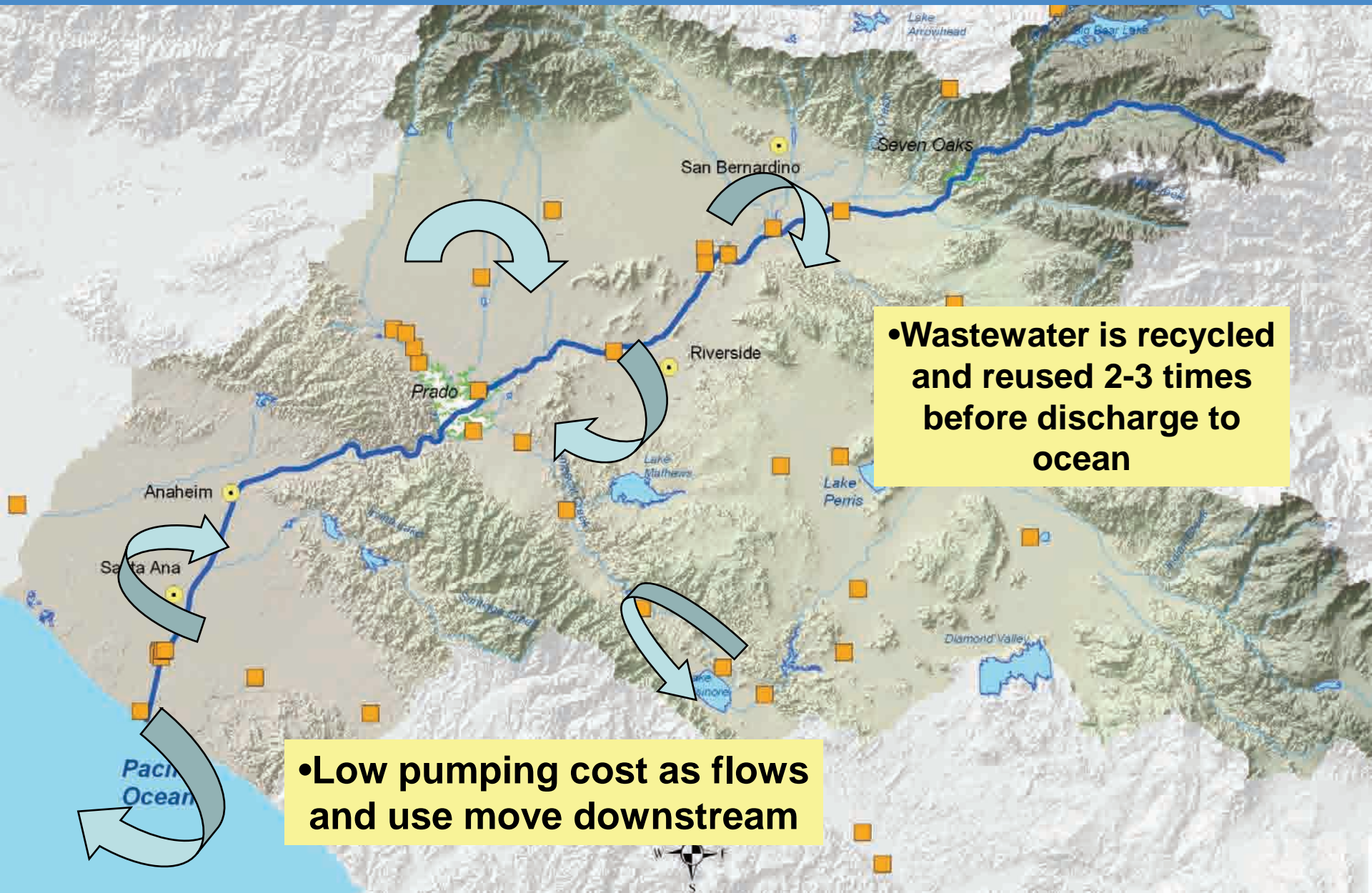
Recycled Water Resource for Future



- Ø **Reliable source of regular supply**
- Ø **Low comparative energy costs**
- Ø **Accessible to most urban communities**
- Ø **More sustainable than other alternative water sources**



• WASTEWATER REUSE IN SANTA ANA RIVER WATERSHED



•Wastewater is recycled and reused 2-3 times before discharge to ocean

•Low pumping cost as flows and use move downstream

Pacific Ocean

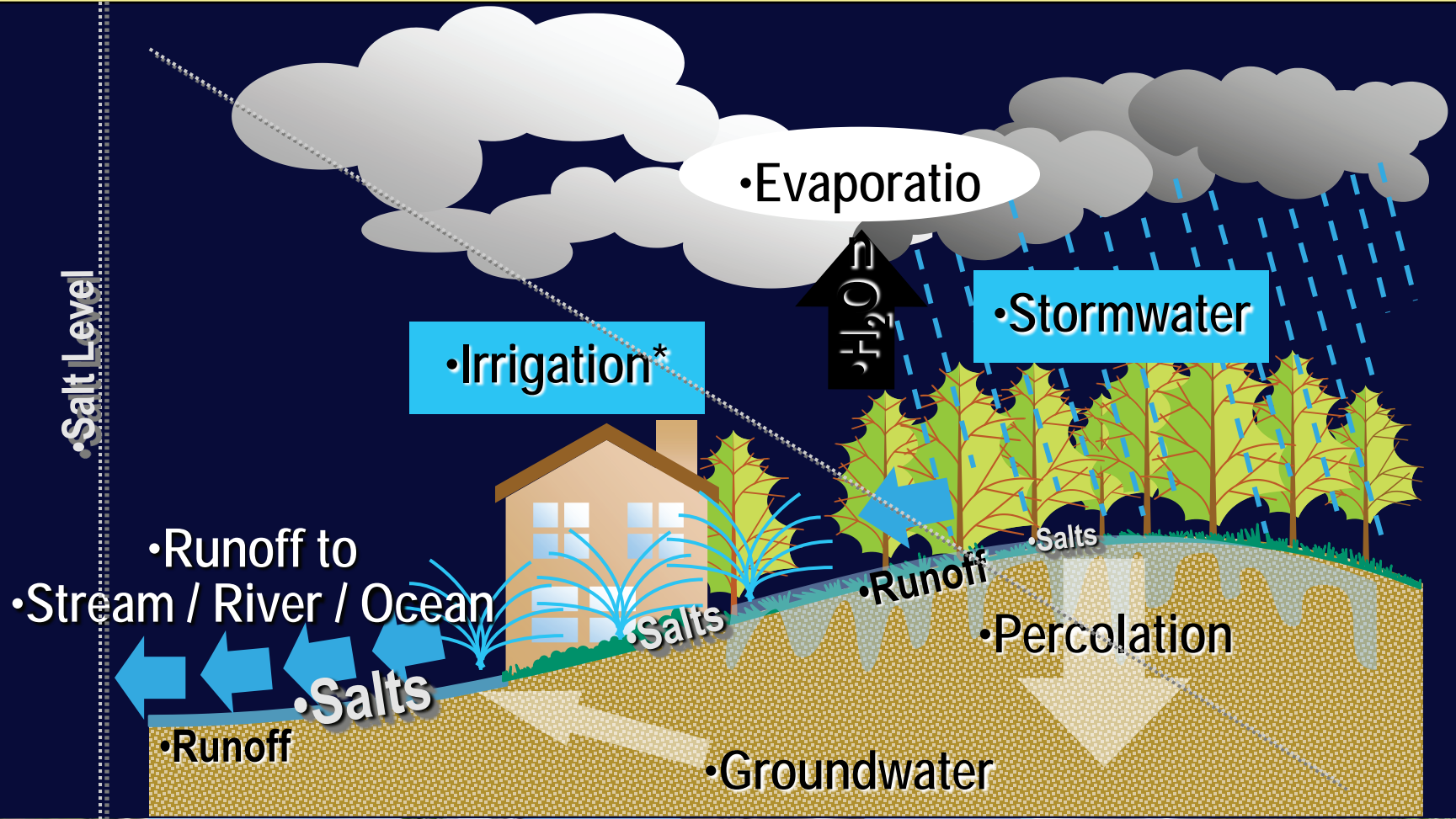


OCWD GWRS





•Water & Salt in Our Watershed



Brine Line to the Ocean



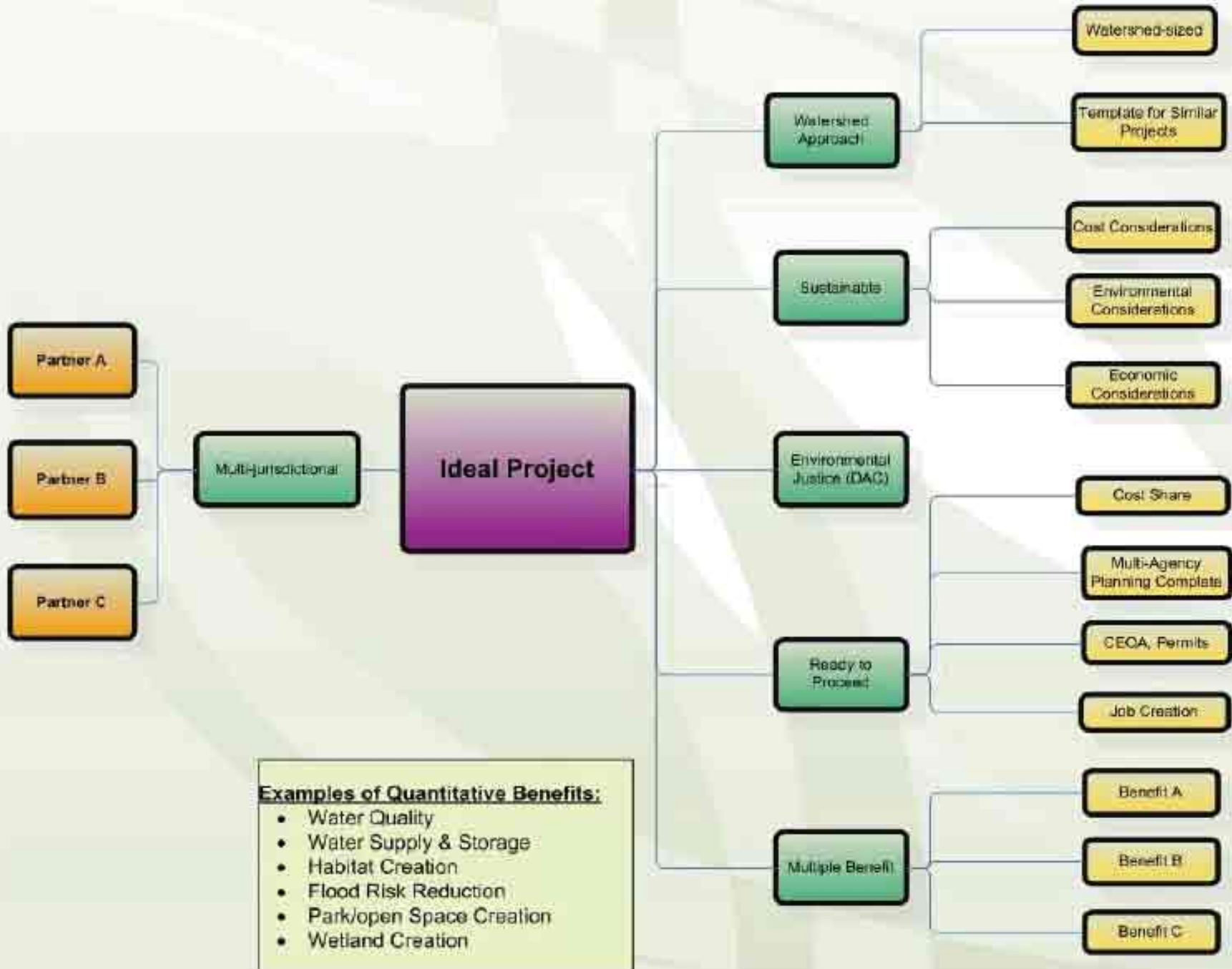


Call for Projects



- Multi-Benefit Concept Proposals
- Due June 30, 2010







Value Water Differently



- Develop a “Water Ethic”
- Price water using Allocated Tiered Rates to set price points and to reflect true costs.
- Value of water to region exceeds its dollar cost





WWW.SAWPA.org

