

Unique Success Stories

*Scalable to Make Local Rainwater a Substantial
and Reliable Component of Our Region's Water
Supply*

Select Committee on Regional Approaches to
Solving the State's Water Crisis

May 18, 2012

Partners = Unique Success

- LA DWP
 - LA Sanitation
 - LA County Public Works
 - City of Santa Monica
 - Council for Watershed Health
 - LA City Engineering
 - US Forest Service
 - LAUSD
 - Southern CA Edison
 - Marisla Foundation
 - Garfield Foundation
 - The Boeing Company
-
- North East Trees
 - The River Project
 - Green Garden Group
 - Green LA
 - Permaculture Alliance
 - Transition Towns

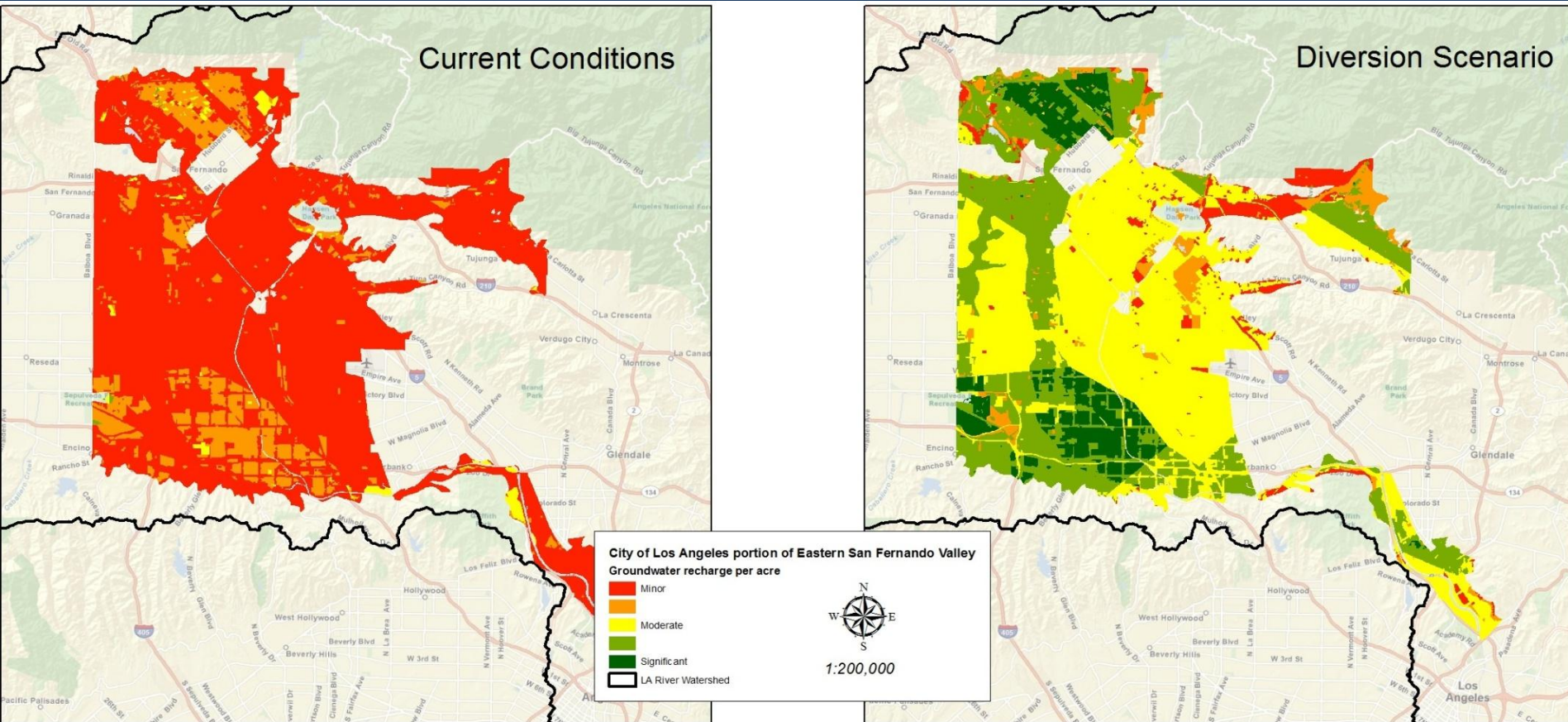
Objectives

- Rainwater's substantial role
- Feasibility: Technical, Economic, Social
- Multi-benefit design and funding is key
- Full Scale Integration is tipping point

Rainwater's Potential

- GWAM Model: Rainwater = 33% via Distributed Groundwater Recharge
- Substantial increase via Water Conserving and Rainwater Harvesting Rain Gardens
- Additional Increase via large volume urban cistern network
- Santa Monica's 2020 goal: 100% local
- What's possible for **GREATER LA**?

Eastern San Fernando Basin – Current Conditions & ¾” Runoff Diversion Scenario



Shifting to Integrated Management

Current approach causes multiple problems.

Los Angeles Today

Dis-integrated approach wastes resources, duplicates efforts and imposes unsustainable practices.



Shifting to Integrated Management

Current approach causes multiple problems.

Los Angeles Today

Dis-integrated approach wastes resources, duplicates efforts and imposes unsustainable practices.



Shifting to Integrated Management

Current approach causes multiple problems.

Los Angeles Today

Dis-integrated approach wastes resources, duplicates efforts and imposes unsustainable practices.

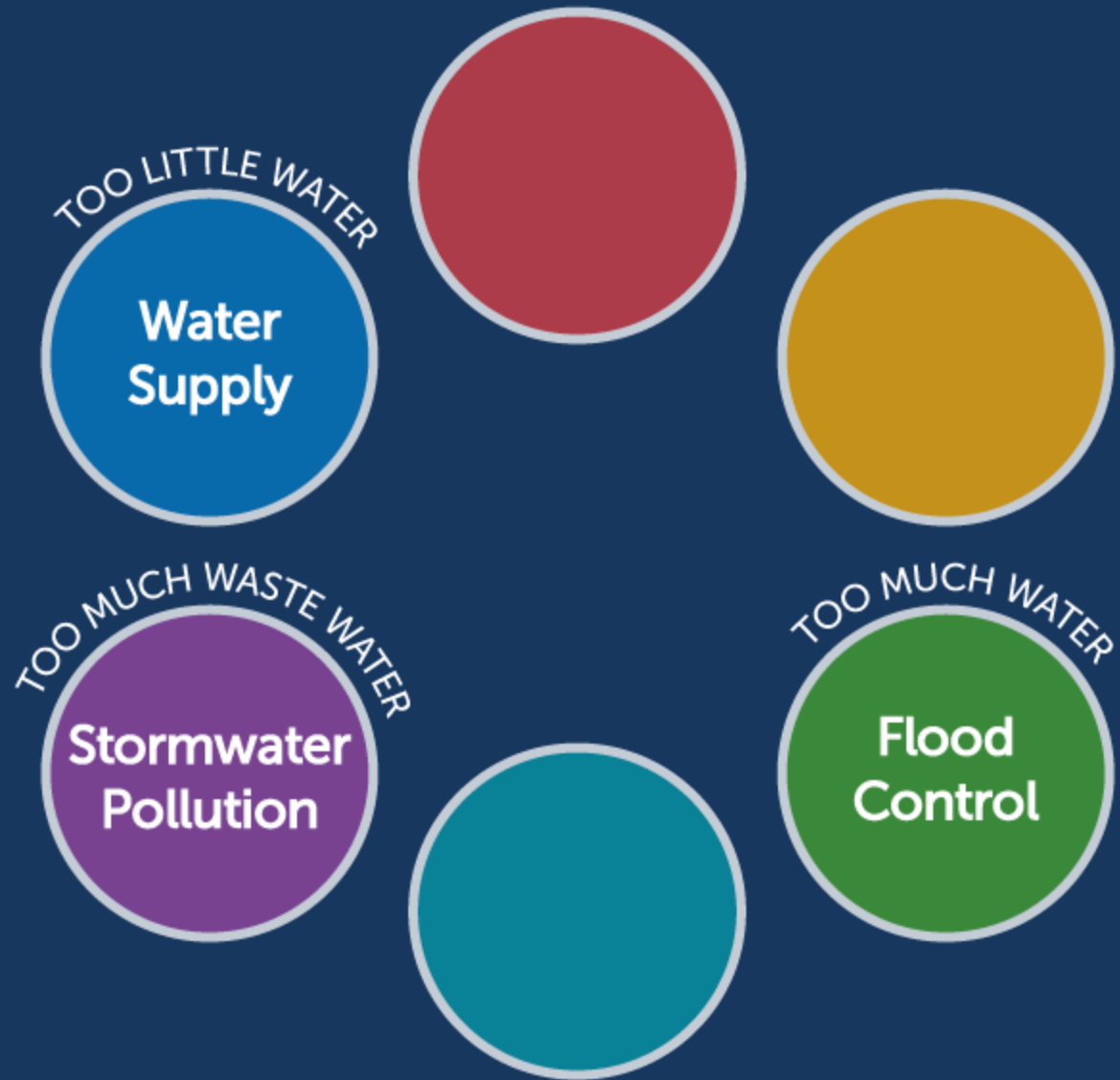


Shifting to Integrated Management

Current approach causes multiple problems.

Los Angeles Today

Dis-integrated approach wastes resources, duplicates efforts and imposes unsustainable practices.

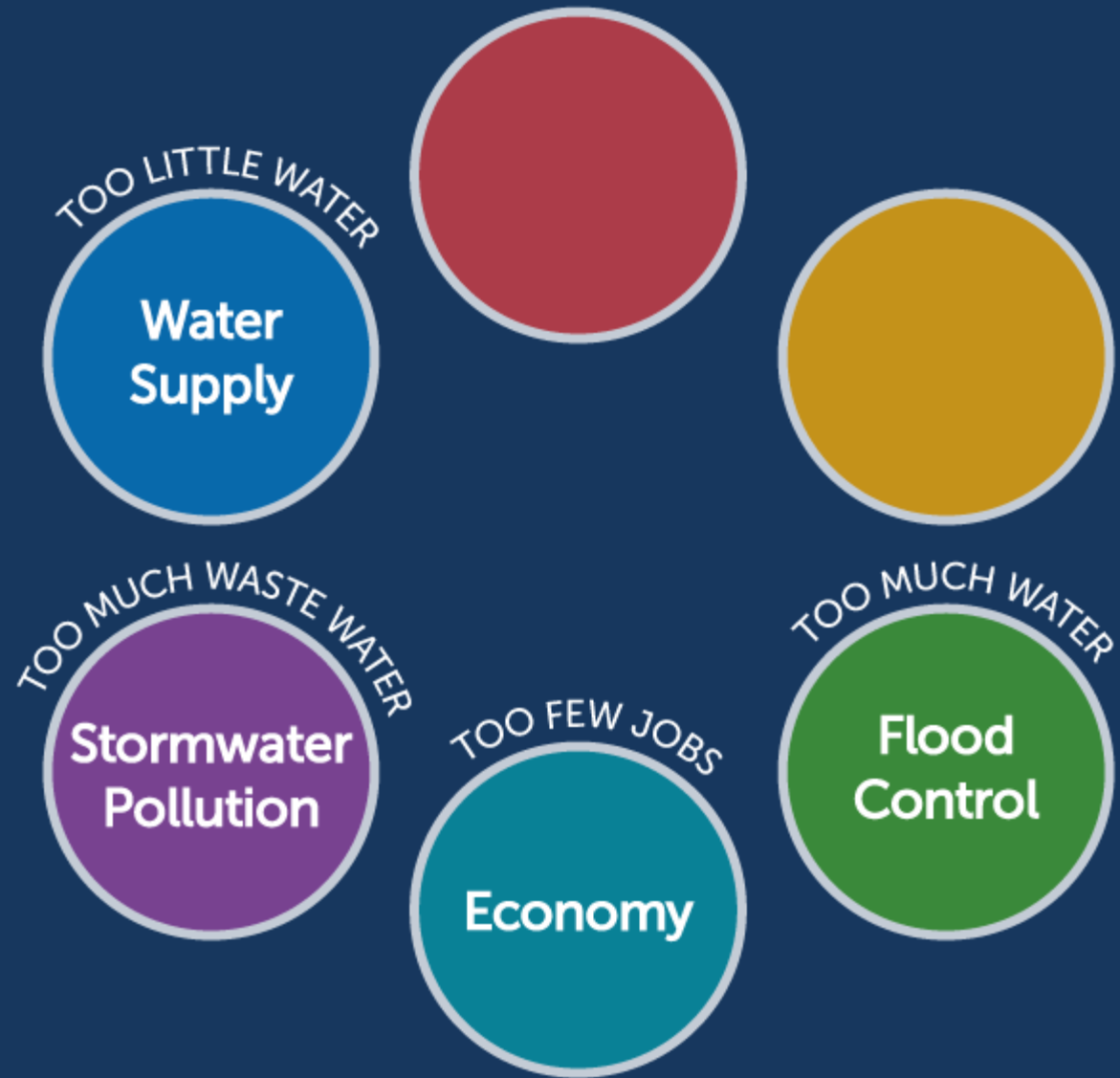


Shifting to Integrated Management

Current approach causes multiple problems.

Los Angeles Today

Dis-integrated approach wastes resources, duplicates efforts and imposes unsustainable practices.



Shifting to Integrated Management

Current approach causes multiple problems.

Los Angeles Today

Dis-integrated approach wastes resources, duplicates efforts and imposes unsustainable practices.



Shifting to Integrated Management

Current approach causes multiple problems.

Los Angeles Today

Dis-integrated approach wastes resources, duplicates efforts and imposes unsustainable practices.



Shifting to Integrated Management

An integrated approach creates multiple solutions.

Los Angeles Potential

Integrated approach also creates jobs and liberates funds for emerging green technologies.



DEMONSTRATING FEASIBILITY:

Homes, Streets, Parks, Schools





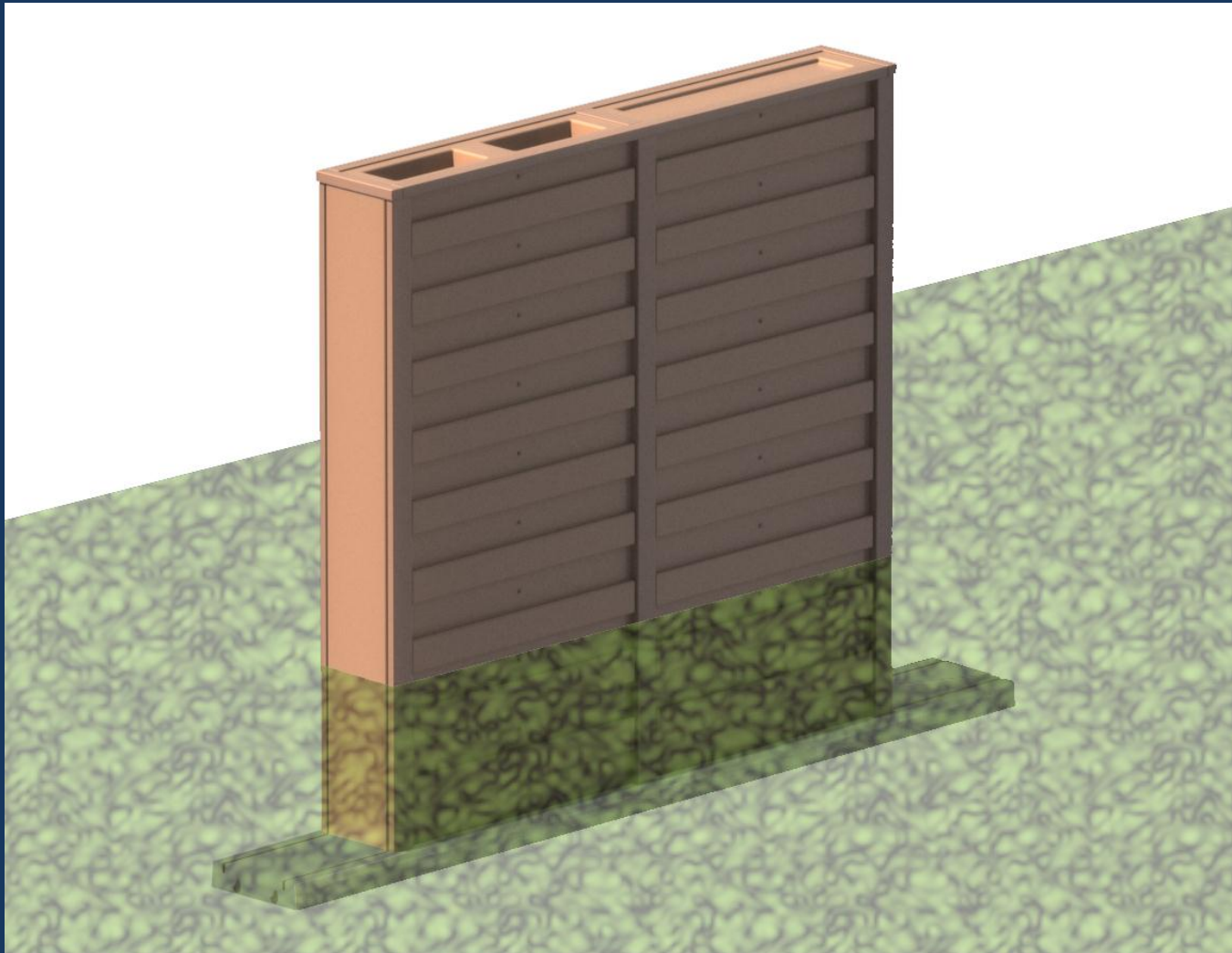
Cisterns in Homes and Schools



Cistern Fence



Cistern Fence Module



DWP Rain Garden Pilot







COOK

250015

Vortech 9000 Pacoima

INLET

Vortech
Water Treatment
Systems

COOK

INLET

250015

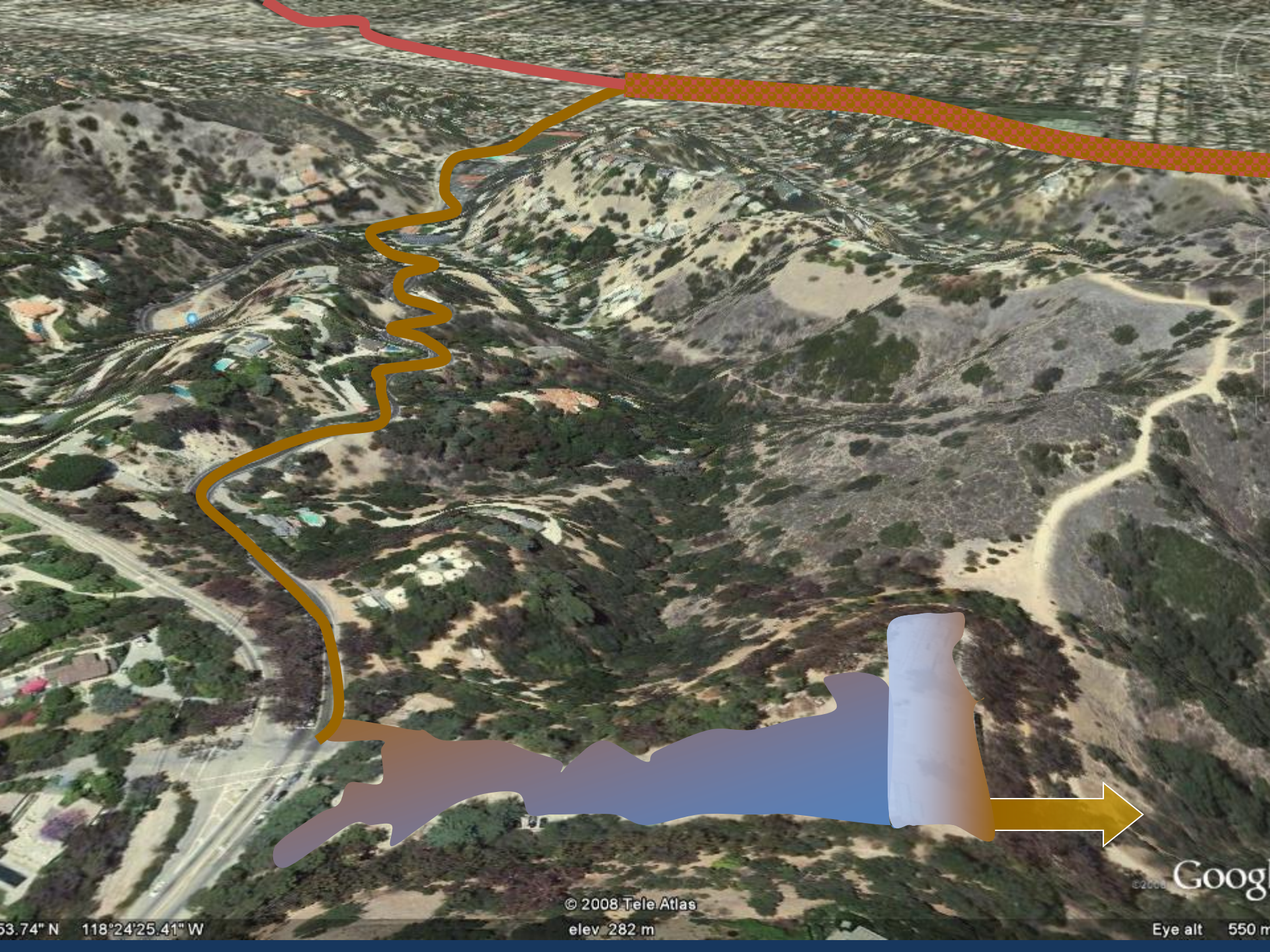












53.74° N 118°24'25.41" W

© 2008 Tele Atlas
elev 282 m

©2008 Google
Eye alt 550 m

Tree-Mimicking Rain Harvesting



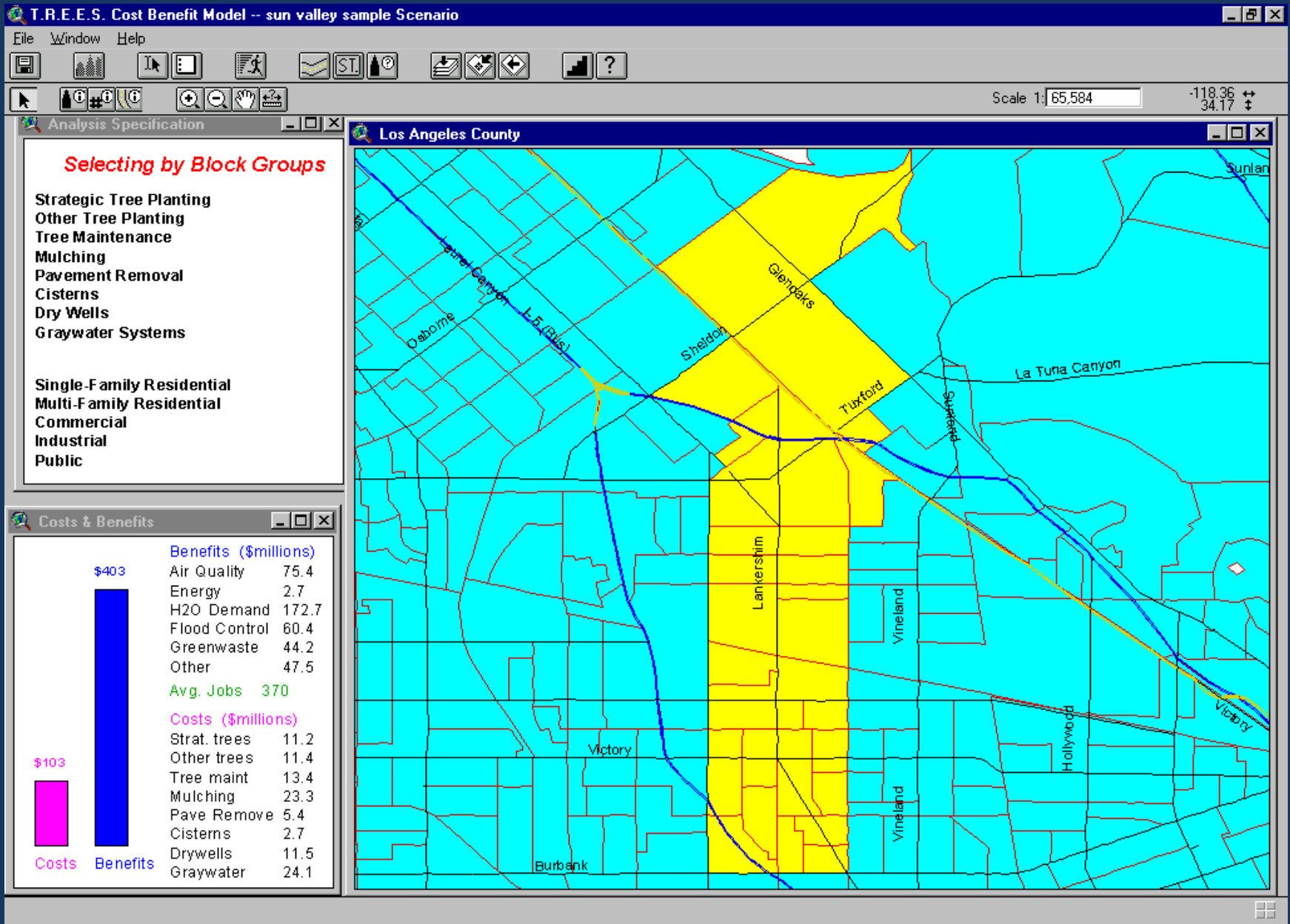
1.8" rain = 24,300 gallons
captured last weekend



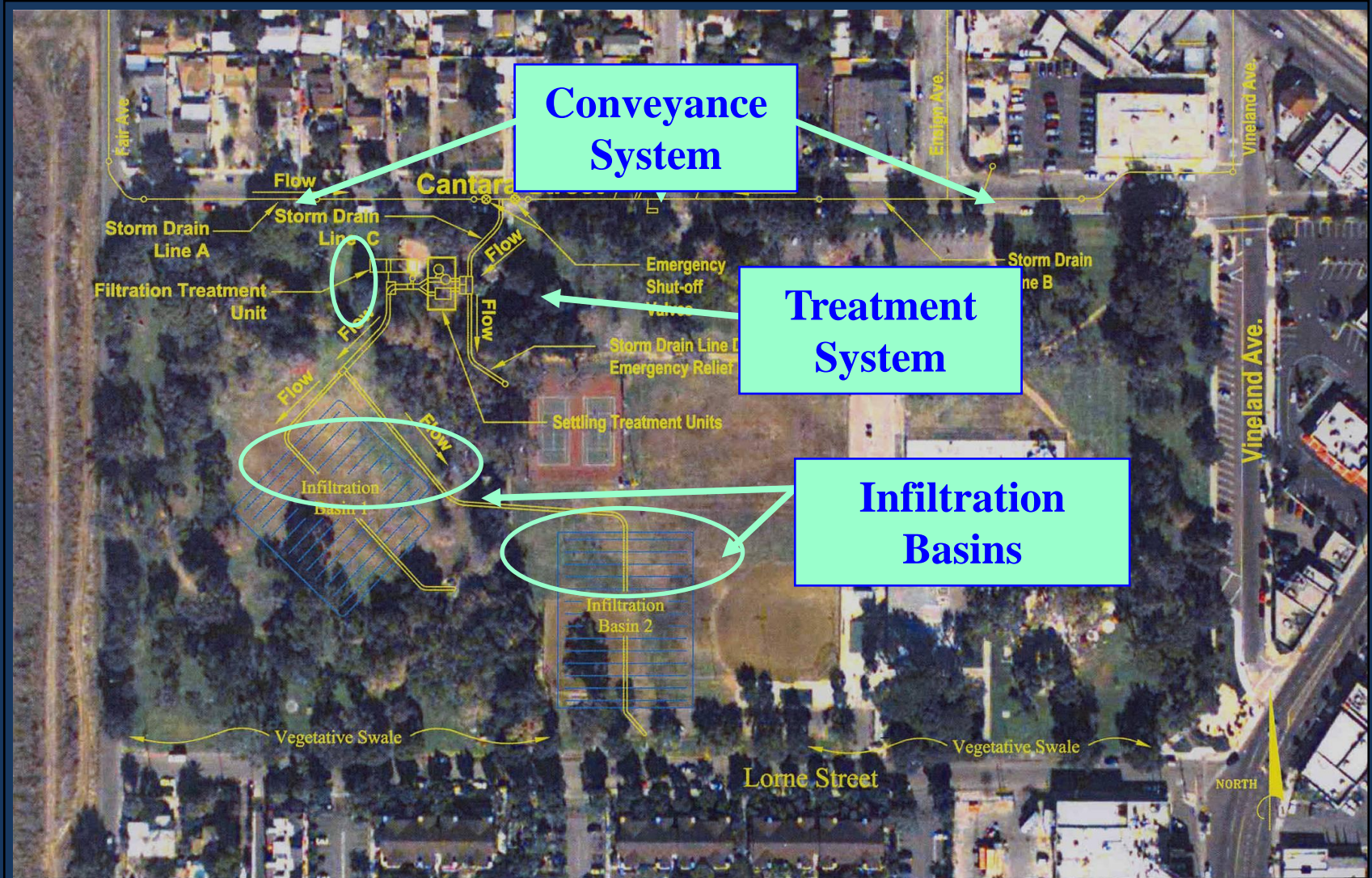
Sun Valley Watershed



Multi-Purpose = Viability



THIS Park Harvests Rainwater!









2008 2/15
2008 2/15

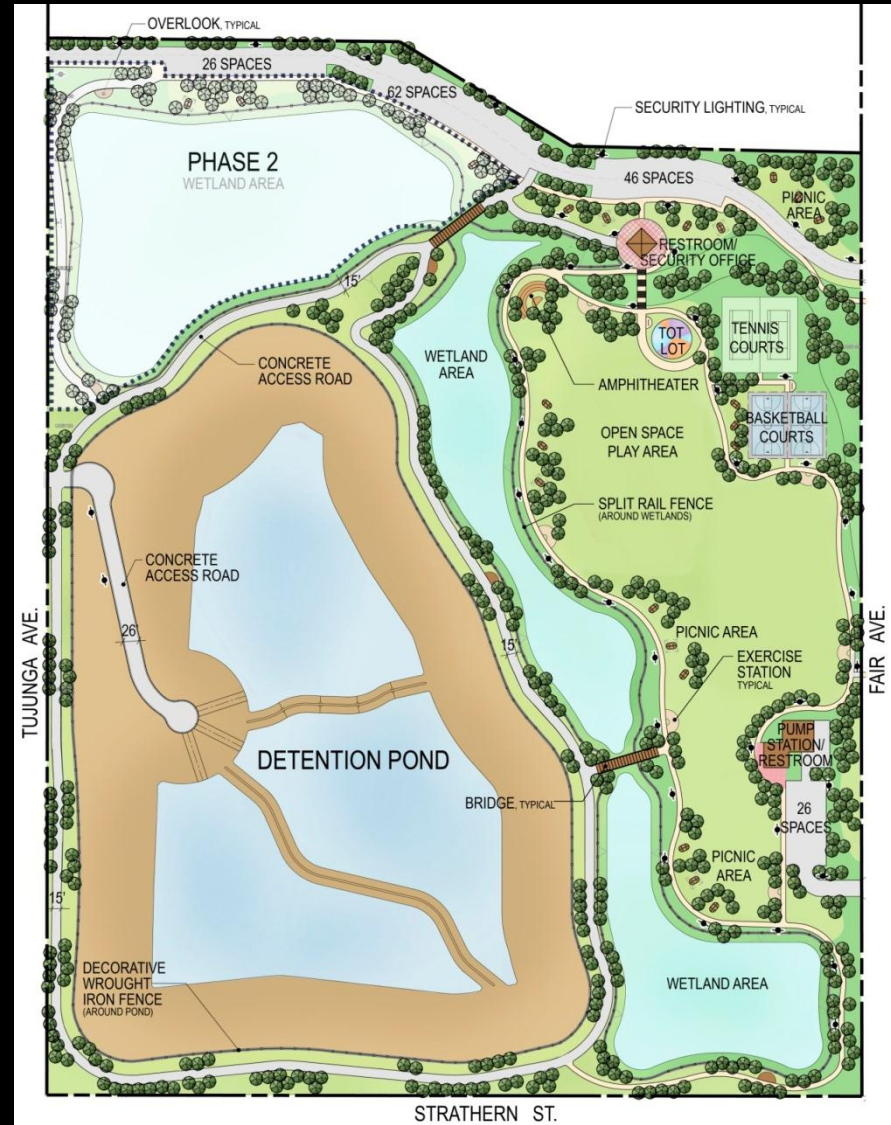
Stormwater flow to Sun Valley Park



STRATHERN WETLANDS PARK



Existing Construction Debris Landfill



Proposed Multi-Use Park

STRATHERN WETLANDS PARK (ARTIST RENDERING)





Impacts and Changes

- LA County Flood Control *creates* Watershed Management Division
- LA City Stormwater Management *becomes* Watershed Protection Division
- Sun Valley Watershed: \$50 million → \$200 Million
- *Integrated Resources Plan (LA City)*
- \$500 Million Bond Passed (Measure O)
- Integrated Regional Watershed Management Planning
- Strategic Growth Council
- Los Angeles County Regional Stormwater Fee

Imagine...the city: 2.0

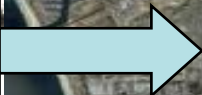
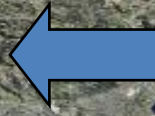


Image © 2007 DigitalGlobe
Image NASA

©2007 Google™